

# ZSE MARKETS

## NEWSLETTER

I S S U E 3 : 2 0 2 2



### ABOUT ZSE MARKETS



The ZSE Markets is responsible for the ZSE primary and secondary markets which comprise of new and existing listings, product development, market data, trading and operations.

This issue of the ZSE Markets Newsletter, provides market highlights on the performance of the ZSE for the period 1 July to 30 September 2022.

### In this Issue

Market Highlights P. 2

Exchange Traded  
Funds P. 5

Market Capitalisation P. 10

Indices Performance P. 3

Foreign Trades P. 9

ZSE Direct Highlights P. 12

## Q3 2022 MARKET HIGHLIGHTS

- The ZSE recorded a total market turnover of ZWL\$33 billion in Q3 2022, representing 4% decrease from the previous quarter. In comparison to the same period last year (Q3 2021), the market turnover recorded a 199% jump from ZWL\$11 billion.
- The market capitalisation decreased by 25% from the previous quarter, to end at ZWL\$1.82 trillion. This represents a 76% increase from the same comparative period last year.
- ZSE All Share Index recorded losses of 25% from Q2 2022 to Q3 2022 to close at 14,771.65 points.
- Foreign investor participation accounted for 23% of Q3 2022 trades and 7% of Q3 2021 trades.

## COMPARISON OF Q3 2022 AND Q2 2022

	Q3 2022	Q2 2022	% Change
Turnover	ZWL\$33Billion	ZWL\$35Billion	-6%
Volume	ZWL\$516 Million	ZWL\$660Million	-22%
Number of Trades	24,338	35,776	-32%
Foreign Trades	ZWL\$7.4Billion	ZWL\$3.4Billion	118%
ZSE All Share	14,771.65	19,791.94	-25%

## COMPARISON OF Q3 2022 AND Q3 2021

	Q3 2022	Q3 2021	% Change
Turnover	ZWL\$33Billion	ZWL\$11Billion	200%
Volume	ZWL\$516 Million	ZWL\$3.2 Billion	-84%
Number of Trades	24,338	29,756	-18%
Foreign Trades	ZWL\$7.4Billion	ZWL\$760 Million	874%
ZSE All Share	14,771.65	8,580.16	72%

### Q3 2022 INDICES PERFORMANCE

- The ZSE All Share Index which is the measure of the overall market performance dropped 25% in Q3 2022 to close at 14,771.65 points.
- The ZSE top 10 Index which is the blue-chip index on the ZSE lost 26% to close at 9,140.55 points in Q3 2022.
- The ZSE Agriculture Index recorded the most losses the Q3 2022, registering 33% loss to close at 75.28 points

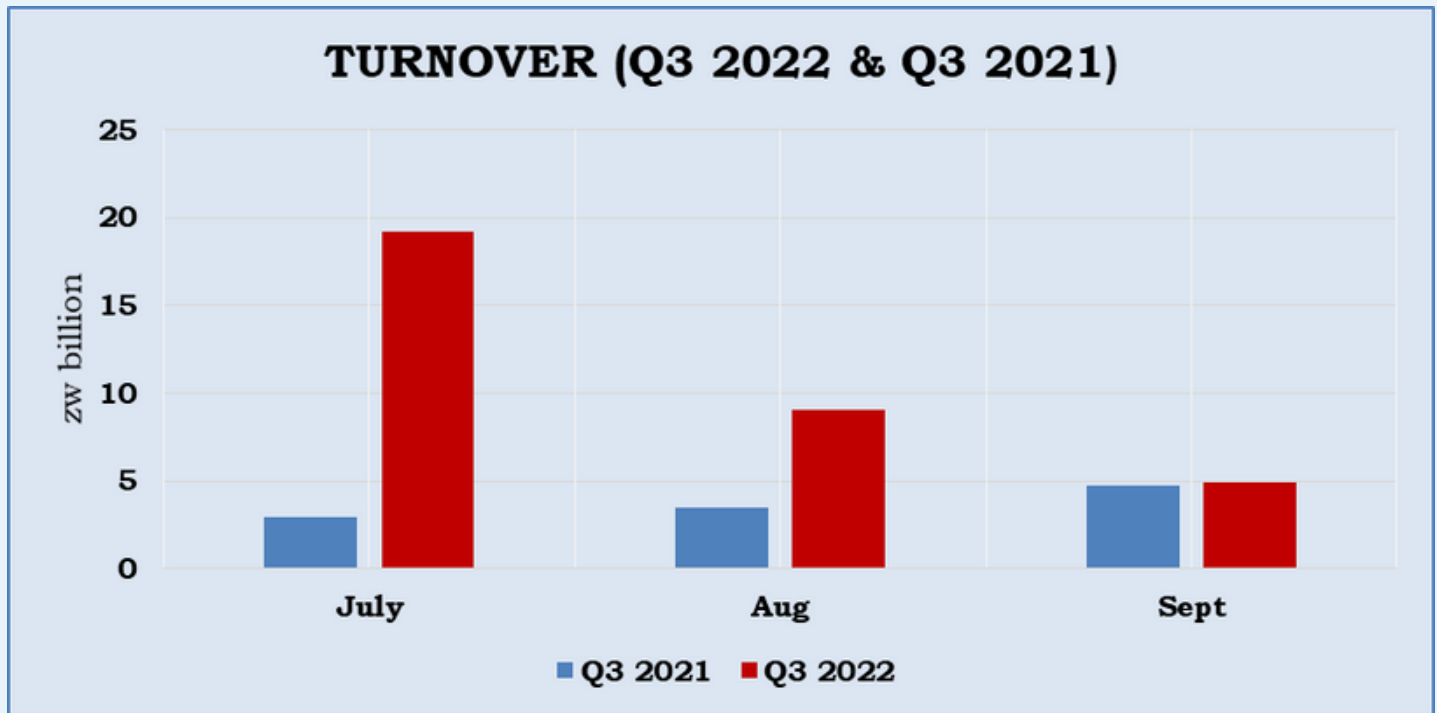
### TURNOVER

#### Equities

- Q3 2022 recorded a turnover figure of \$33 billion and this represents 4% decline from the previous quarter's turnover.
- In comparison to the same period last year (Q3 2021), the market turnover recorded a 199% jump from ZWL\$11 billion.

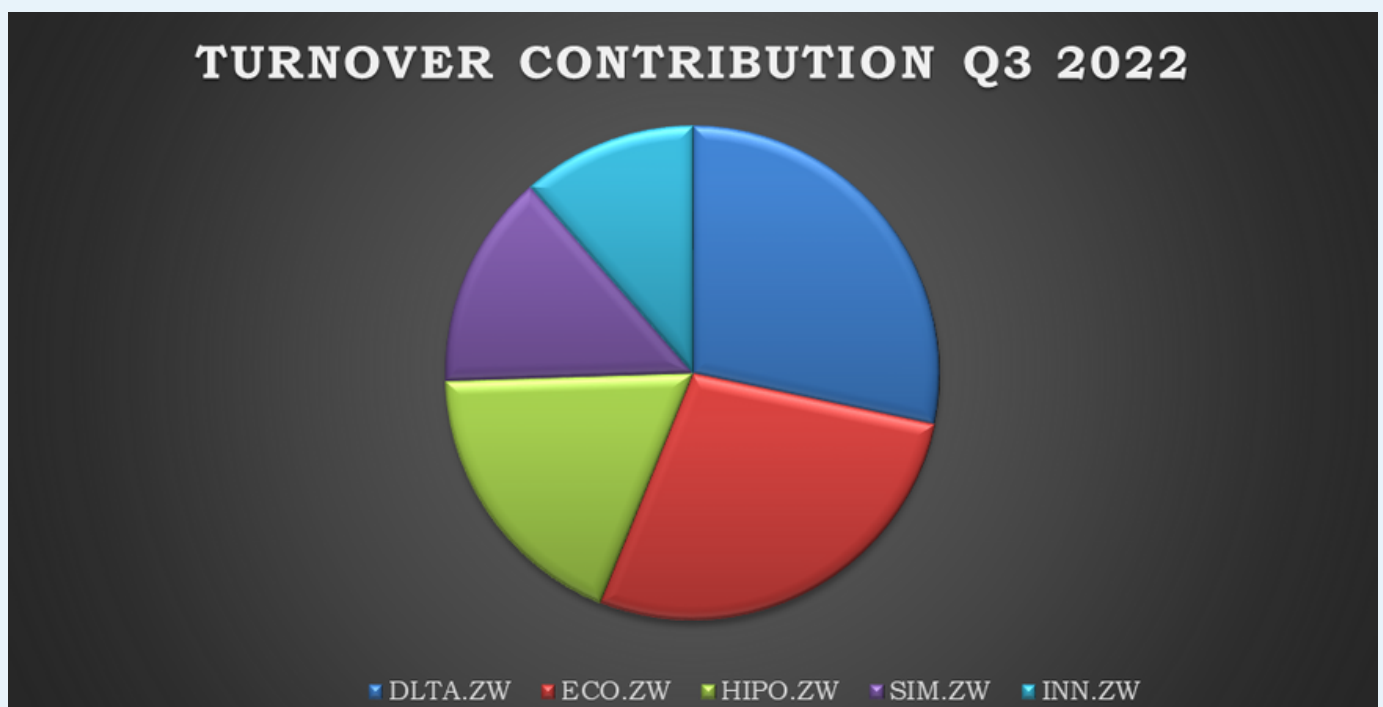
## TURNOVER

- Below is a graphical presentation comparing turnover between Q3 2022 and Q3 2021.



- The top five traded companies during the period under review were DLTA.zw (\$7.39 billion), ECO.zw (\$7.25 billion), HIPO.zw (\$4.79 billion), SIM.zw (\$3.68 billion) and INN.zw (\$2.98 Billion).
- The total turnover for the top 5 companies contributed 78% of the total turnover for Q3 2022.

The chart below shows the turnover contributions for Q3 2022.



## EXCHANGE TRADED FUNDS

- The ZSE introduced a new index named ZSE ETF Index at the beginning of Q2 2022 to measure the performance of ZSE listed ETFs. In Q3 2022 the ZSE ETF Index lost 6% to settle at 240.72 points.
- The total value traded on the ETF board was \$151 million and the total number of ETF units that exchanged hands in Q3 2022 was 34 million units.
- The market capitalisation for the ETFs was ZWL\$8.3 billion at the end of Q3 2022 .

The graph below shows the overall growth of the ETF Market capitalisation.

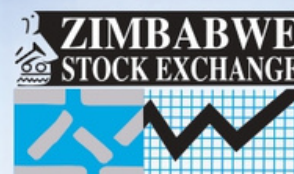




# ZSE Online Investor Information

Information available on the ZSE Website for Investors includes:

- Market Data which include:
  - Market Statistics
  - Top Gainers and Losers
  - ZSE Market cap and Sector Indices
  - Market activity (Market capitalisation, turnover, foreign buys, foreign sells, trades)
- Market Commentary
- Price Sheet
- Rules and Regulations
- Details of Listed Securities
- Contact details of Stockbrokers
- Corporate announcements and Notices
- Information about the ZSE and its operations



44 Ridgeway North  
Highlands, Harare

Email: [info@zse.co.zw](mailto:info@zse.co.zw)

Tel: +263 (24) 2886830-5

Facebook: [Zimbabwe Stock Exchange](#)

Twitter: [@ZSE\\_ZW](#)

LinkedIn: [Zimbabwe Stock Exchange](#)

Website: [www.zse.co.zw](http://www.zse.co.zw)

## MOVERS AND SHAKERS

### Top Five Price Movers

- The table below shows the share price performance of the top five movers by percentage price movement for Q3 2022.

Symbol	Price at 30-Sept-2022	Price at 30-June-2022	% Change
UNIF.ZW	47.50	30.40	56.25
GBH.ZW	2.00	1.30	53.8462
TRUW.ZW	2.60	1.87	39.0374
EDGR.ZW	6.80	5.10	33.33
ASUN.ZW	17.9438	14.4783	23.9358

## TOP FIVE PRICE SHAKERS

- The table below shows the share price performance of the top five shakers by percentage price movement for Q3 2022.



Symbol	Price at 30-Sept-2022	Price at 30-June-2022	% Change
TSL.ZW	40.00	126.00	-68.2540
TANG.ZW	85.00	223.00	-61.8834
BFCA.ZW	7.70	19.9988	-61.4977
AXIA.ZW	50.1090	119.1053	-57.9288
PROL.ZW	26.00	59.45	-56.2658

## FOREIGN TRADES

- Foreign investor participation was 23% in Q3 2022.
- Q3 2022 recorded net sells position of \$2.2 billion.
- The table below shows foreign trades movement in 2022



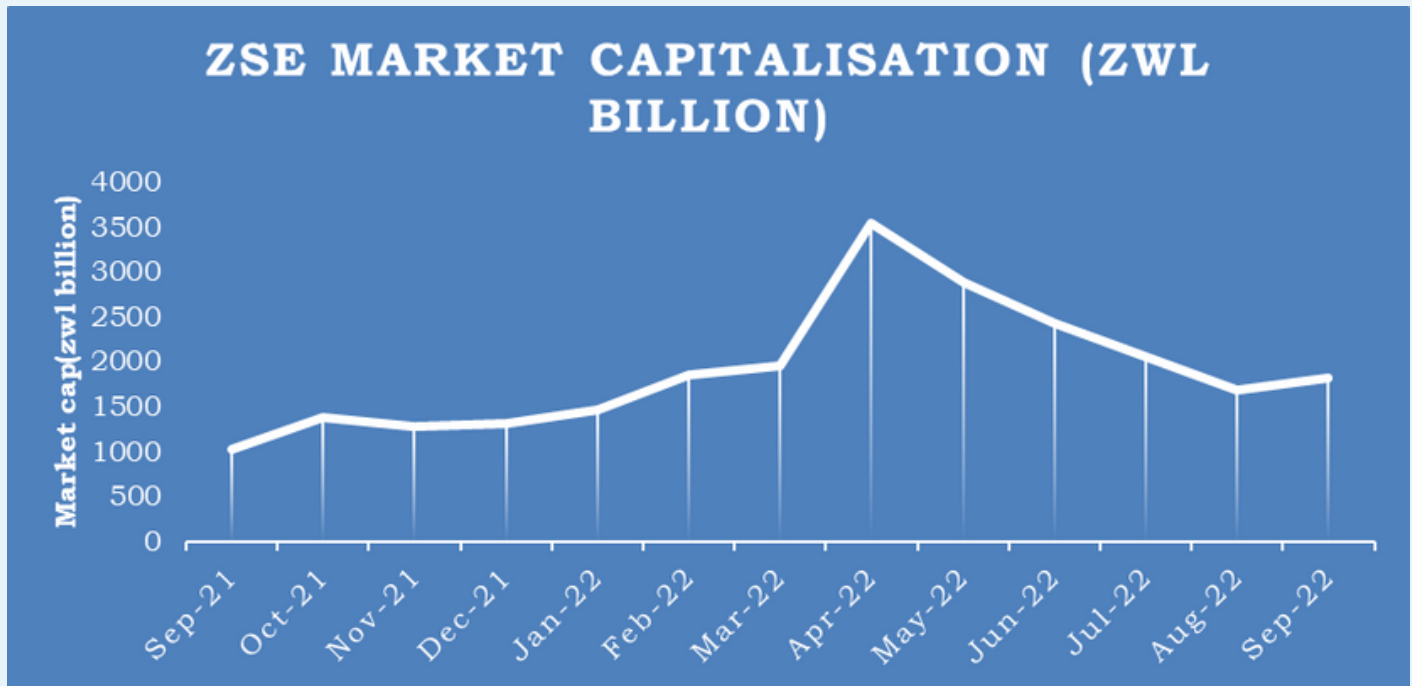
## FOREIGN TRADES

- The table below shows foreign trades movement in 2022

Period	2022	2022	2022
	RTGS -Millions	RTGS -Millions	
	Purchases	Sells	Net
January	52.64	254.00	-201.36
February	658.59	821.09	-162.51
March	781.44	740.57	+40.87
April	609.16	1,078.81	-469.65
May	271.85	1,544.76	-1,272.91
June	330.75	3,012.11	-2,681.36
July	5,421.14	7,324.52	-1,903.38
August	873.36	898.46	-25.10
September	71.37	379.35	-307.98
Cumulative	9,070.30	16,053.67	-6,983.38

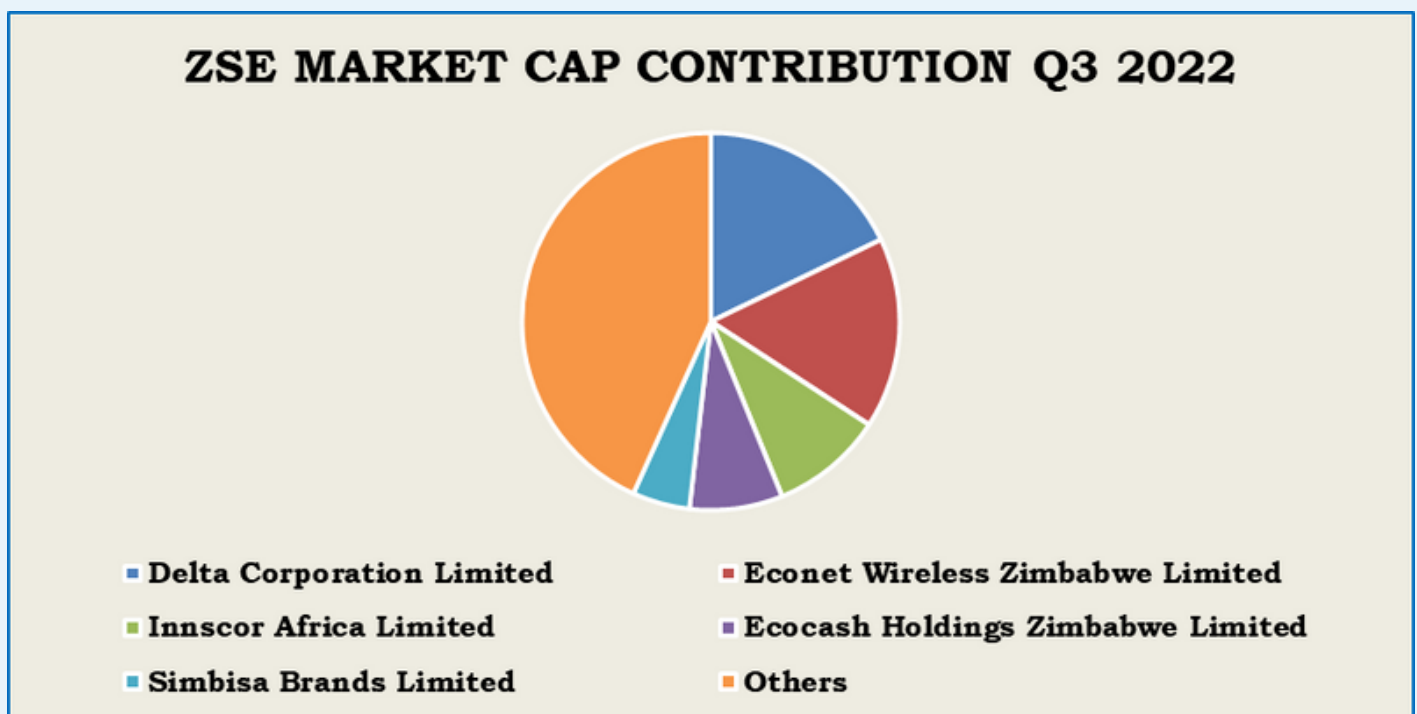
## MARKET CAPITALISATION

- The ZSE market capitalisation for Q3 2022 closed at \$1.82 trillion, representing a 25% decrease from the previous quarter.



### Market Cap Contribution

- The top five biggest contributors to market cap were DLTA.ZW, ECO.zw, INN.zw, EHZL.zw and SIM.zw which contributed 18%, 16%, 10%, 8% and 5% respectively.
- The rest of the counters contributed 43% of the market cap in Q3 2022.
- The graph below shows the market cap contribution.



# ZSE Direct

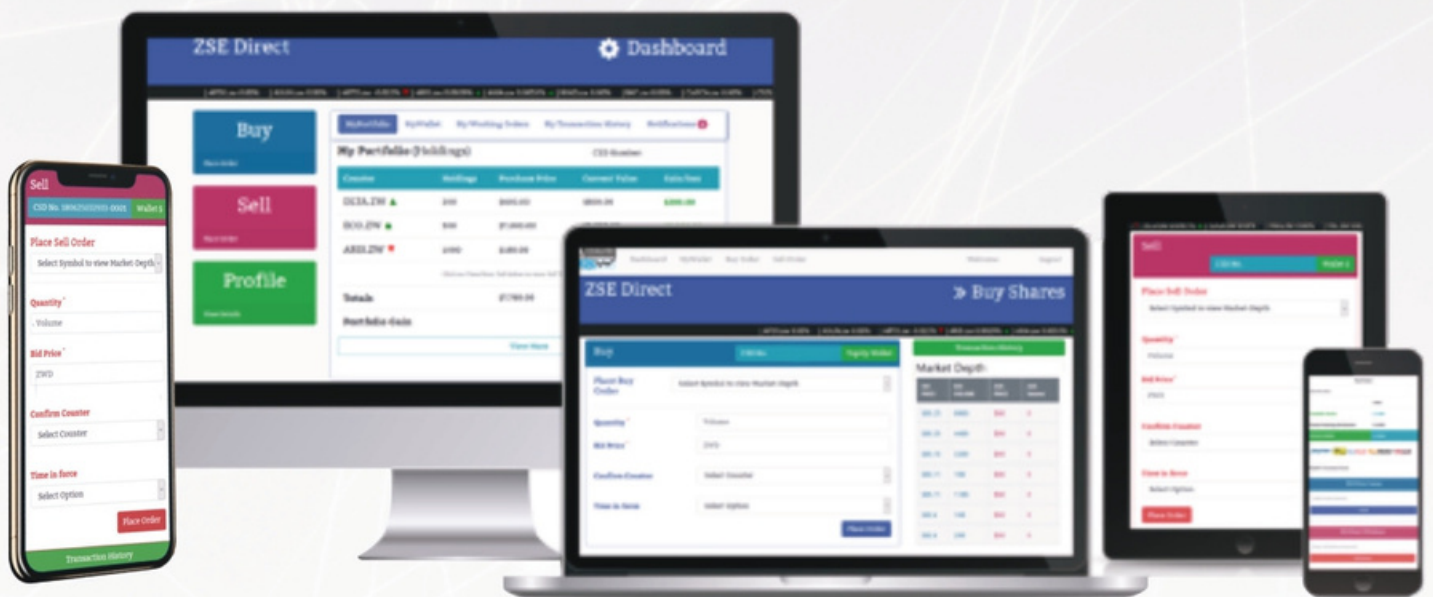
ZSE Direct is the official online trading platform of the Zimbabwe Stock Exchange

ZSE Direct provides retail investors with a smart way to manage their ZSE investments online.

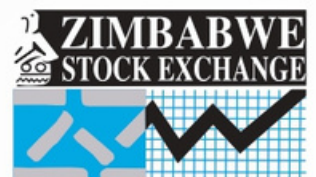
**ZSE Direct makes it easy to buy and sell securities listed on the ZSE and has the following key features:**

- User friendly interface
- Your portfolio indicating securities in your securities account
- Latest market statistics
- The market depth feature showing up to 10 best orders on both the buy and sell side
- Price range on Buy and Sell tabs
- Crediting of sell proceeds to your ZSE Direct wallet on the same trading day after a successful matched and confirmed sell order
- Placing of bids or offers for volumes from 1 up to 99

**REGISTER TODAY ➤**



Available on:  
AppStore and Google Playstore



44 Ridgeway North  
Highlands, Harare

**Email:** zsedirect@zse.co.zw

**Tel:** +263 (24) 2886830-5, 0719 225 779

**Facebook:** Zimbabwe Stock Exchange

**Twitter:** @ZSE\_ZW

**LinkedIn:** Zimbabwe Stock Exchange

**Instagram:** Zim Stock Exchange

**Website:** www.zsedirect.co.zw

# ZSE DIRECT

ZSE Direct is an online and mobile trading platform, which was specifically designed with the retail investor in mind to make the process of accessing the stock market easier even for first-time investors on the ZSE.



## ZSE DIRECT STATISTICS

- The table below shows the % change of the performance on ZSE Direct in Q2 2022 and Q3 2022.

Indicator	Q3 2022	Q2 2022	% Change
Total Traded Value	ZWL\$ 163,743, 002.79	ZWL\$153,967,246.59	6.35%
Total Traded Volume: Sells	3,170,250	6,195,084	-48.82%
Buys	8,362,063	16,471,827	-49.23%
Number of trades	8,792	12,310	-28.57%
Number of active users	8,088	7,471	8.23%

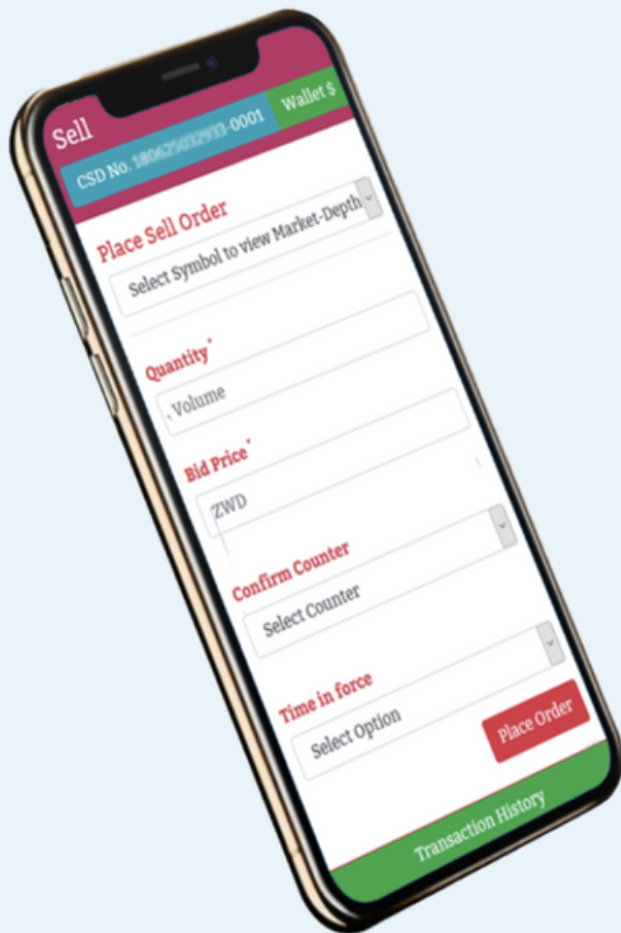




## ZSE DIRECT STATISTICS

- The table below shows the % change of the performance on ZSE Direct in Q3 2021 and Q3 2022.

Indicator	Q3 2022	Q3 2021	% Change
Total Traded Value	ZWL\$163,743, 002.79	ZWL\$67,870 537.09	141.25%
Total Traded Volume: Sells	3,170,250	7,641,709	-58.51%
Buys	8,362,063	15,753 930	-46.92%
Number of trades	8,792	9,454	-7%
Number of active users	8,088	4,157	94.56%





For additional  
information, feel free  
to get in touch

[www.zse.co.zw](http://www.zse.co.zw)

[www.zsedirect.co.zw](http://www.zsedirect.co.zw)

[operations@zse.co.zw](mailto:operations@zse.co.zw)

[data@zse.co.zw](mailto:data@zse.co.zw)

[zsedirect@zse.co.zw](mailto:zsedirect@zse.co.zw)

+263 (24) 2886830-5